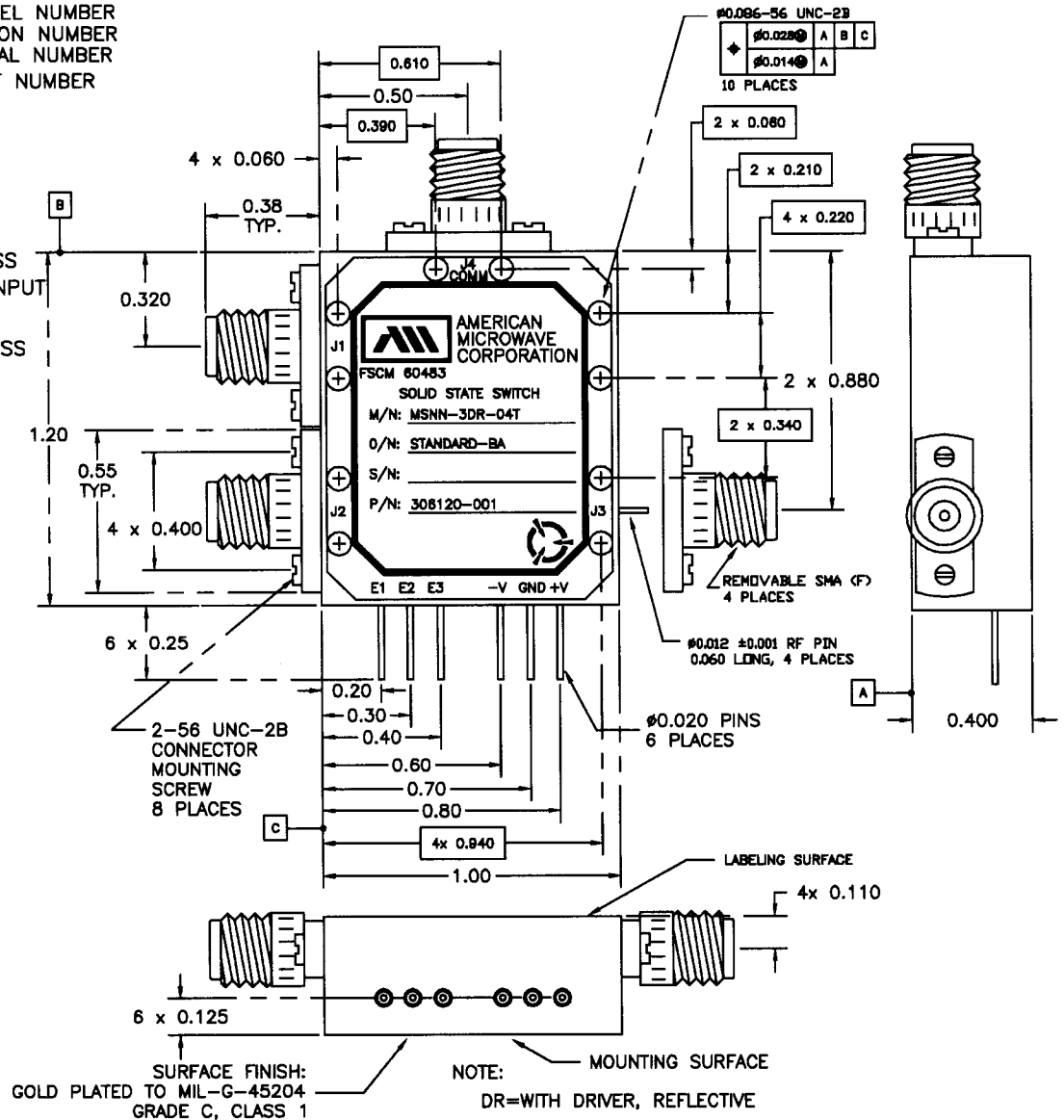


REVISIONS				
ZONE	REV.	DESCRIPTION	DATE	APPROVED
		ORIGINAL RELEASE	4/30/98	

**SPECIFICATIONS:**

- FREQUENCY: ..... 0.5 GHz TO 18 GHz
- IMPEDANCE: ..... 50 OHMS (ALL PORTS)
- INSERTION LOSS: ..... 0.5 GHz TO 6 GHz : 2.0 dB MAXIMUM  
6 GHz TO 18 GHz : 3.5 dB MAXIMUM
- VSWR: ..... 2.0:1 MAXIMUM (INPUT ON, OUTPUT ON)
- ISOLATION: ..... 0.5 GHz TO 18 GHz: 40dB MINIMUM
- RF POWER HANDLING:  
OPERATIONAL: ..... A MAXIMUM OF 0.2dB INCREASE IN THE INSERTION LOSS OF A SWITCH ARM IN THE LOW LOSS STATE FOR AN INPUT POWER LEVEL OF PLUS 29 dBm CW OR LESS  
SURVIVAL: ..... NO CHANGE OR DAMAGE IN PERFORMANCE (IN LOW LOSS OR HIGH LOSS STATE WITH INPUT AT THE COMMON OR THE ARM PORT) AFTER EXPOSURE TO AN INPUT POWER LEVEL OF PLUS 32 dBm CW OR LESS
- CONTROL: ..... TTL COMPATABLE, 3 INDIVIDUAL CONTROLS  
LOGIC "0" = SWITCH "ON"  
LOGIC "1" = SWITCH "OFF"
- SPEED:  
(50% TTL TO 90% RF) OFF TO ON: 250 nS MAXIMUM  
(50% TTL TO 10% RF) ON TO OFF: 250 nS MAXIMUM
- POWER SUPPLY: ..... +5V ±5% @ 50 mA MAXIMUM  
-15V ±5% @ 80 mA MAXIMUM
- RF CONNECTORS: ..... REMOVABLE SMA (F) TO MIL-C-39012 (ALL PORTS)
- WEIGHT: ..... LESS THAN 3 OUNCES
- SIZE: ..... 1.2" x 1.0" x 0.40
- TEMPERATURE RANGE: ..... -40°C TO +85°C

M/N=MODEL NUMBER  
O/N=OPTION NUMBER  
S/N=SERIAL NUMBER  
P/N=PART NUMBER



**ENVIRONMENTAL RATINGS:**

- TEMPERATURE: ..... -55°C TO +85°C (OPERATING)  
-65°C TO +125°C (STORAGE)
- HUMIDITY: ..... MIL-STD-202F, METHOD 103B COND. B
- SHOCK: ..... MIL-STD-202F, METHOD 213B COND. B
- VIBRATION: ..... MIL-STD-202F, METHOD 204D COND. B
- ALTITUDE: ..... MIL-STD-202F, METHOD 105C COND. B
- TEMPERATURE CYCLE: ..... MIL-STD-202F, METHOD 107D COND. A

NOTE: THE ABOVE SPECIFICATIONS ARE SUBJECT TO CHANGE OR REVISION

UNLESS OTHERWISE SPECIFIED  
ALL DIMENSIONS ARE IN INCHES  
TOLERANCES:

X.XX ±0.010  
X.XXX ±0.005

PART NO.		AMERICAN MICROWAVE CORPORATION FREDERICK, MARYLAND		
APPROVALS	DATE	TITLE		
DRAWN <i>WJP</i>	7/15/98	OUTLINE DRAWING MSNN-3DR-04T-STANDARD-BA REFLECTIVE SOLID STATE SWITCH		
CHECKED		SIZE	FSCM NO.	DWG NO.
ISSUED		A	60483	100-4391-4
		SCALE		SHEET 1 of 1